

# 零件目录

## PARTSCATALOGUE



**F4(F5) BM**

# 目录

1、顶罩	1
TOP COWLING	1
2、起动罩	2~3
STARTER	2~3
3、飞轮组件	4
GENERATOR	4
4、底罩	5~6
COWLING, LOWER	5~6
5、气缸和曲轴箱 1	7~8
CYLINDER&CRANKCASE 1	7~8
6、气缸和曲轴箱 2	9~10
CYLINDER&CRANKCASE 2	9~10
7、油箱 1	11
FUEL TANK 1	11
8、曲柄 活塞	12
CRANKSHAFT&PISTON	12
9、阀门	13
VALVE	13
10、化油器	14
CARBURETOR	14
11、操控系统	15~16
CONTROL	15~16
12、托架和水上装置	17~18
BRACKET&UPPER CASING	17~18
13、水下装置和驱动系统	19~20
LOWER CASING&DRIVE	19~20
14、油箱 2	21
FUEL TANK 2	21

# ALLPASS

F4(F5) 零件手册

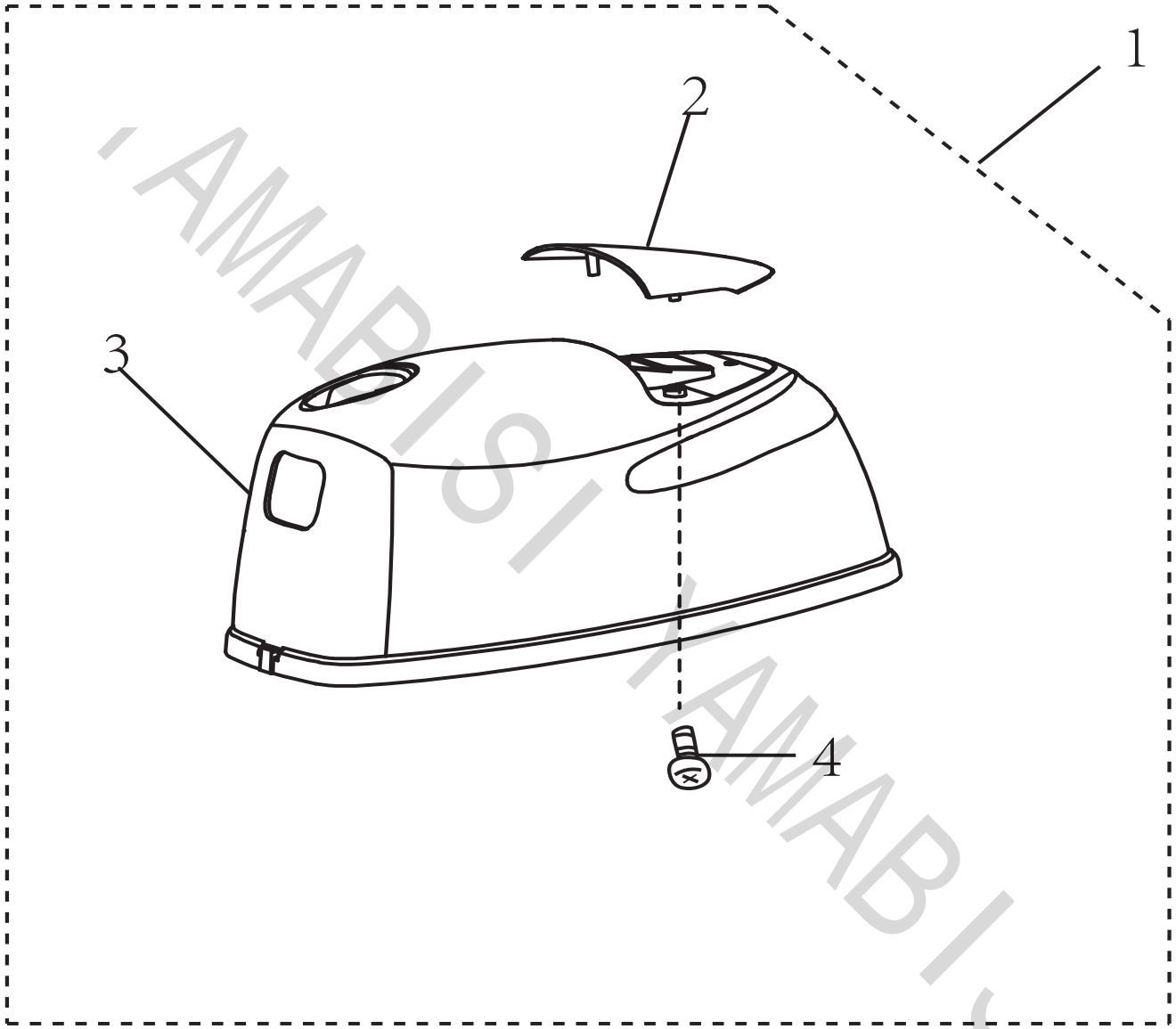
PAGE 01 OF 21

零件名称:

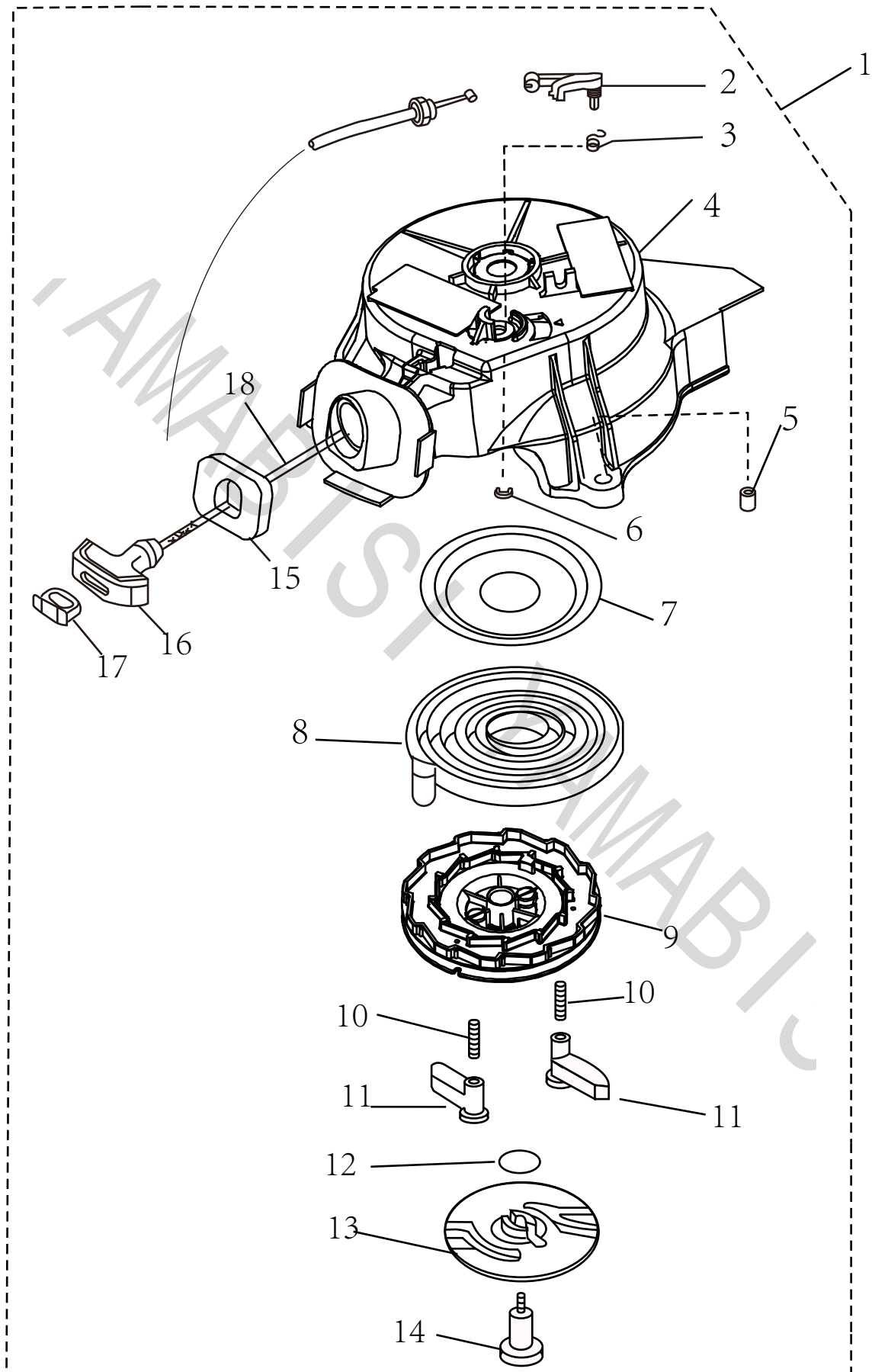
顶罩

PARTS NAME:

TOP COWLING



REF. NO. 编号	PART NO. 零件号码	DESCRIPTION 零件名称	DESCRIPTION 零件名称	NEEDED PCS 数量					REMARKS 备注
1	ALF4-06010000	顶罩组件	TOP COWLING ASSY	1					
2	ALF4-06000003	顶罩消音器盖	TOP COWLING CAP	1					
3	ALF4-06000001	顶罩	TOP COWLING	1					
4	GB/T845-86	沉头自攻螺钉M4. 8*12	SCREW. PAN HEAD	3					



# ALLPASS

零件名称:

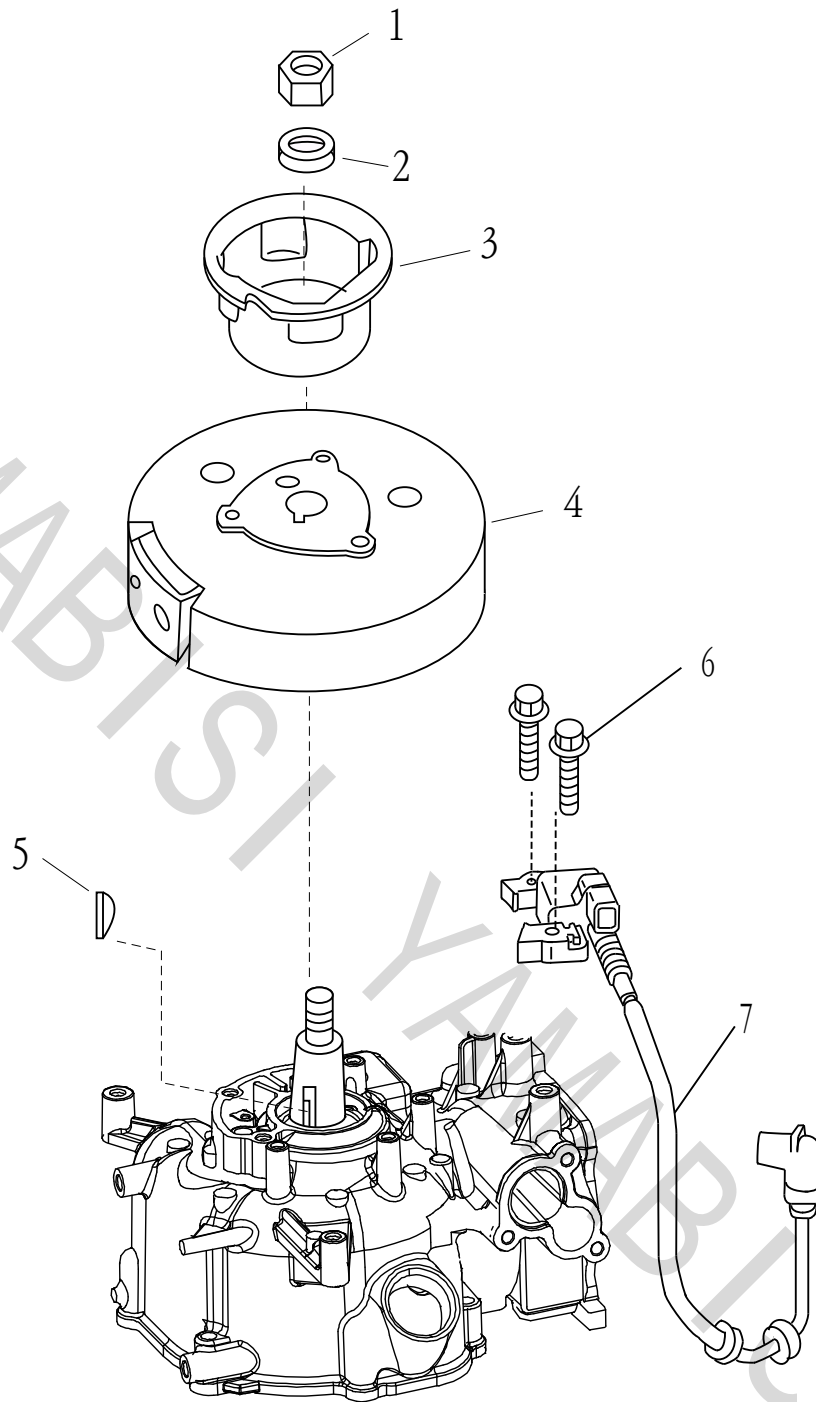
起动罩

PARTS NAME:

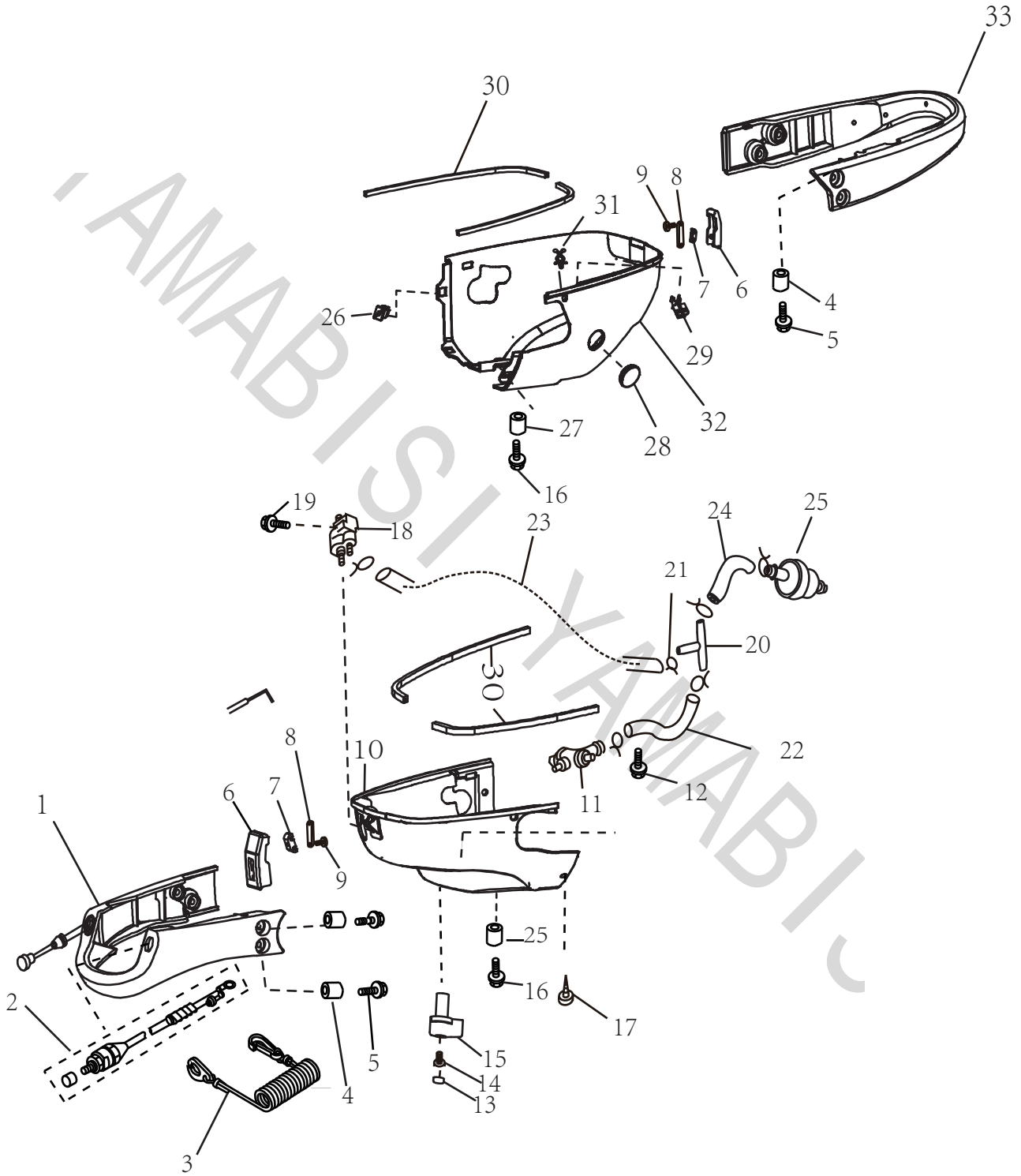
STARTER

REF. NO. 编号	PART NO. 零件号码	DESCRIPTION 零件名称	DESCRIPTION 零件名称	NEEDED PCS 数量					REMARKS 备注
1	ALF4-05070000	起动罩组件	STARTER ASSY	1					
2	ALF4-05070010	制动器	BRAKE	1					
3	ALF4-05070011	制动器扭簧	SPRING, BRAKE	1					
4	ALF4-05070001	起动罩	CASE, STARTER	1					
5	ALF4-05070002	起动罩衬管	BUSHING	3					
6	GB896-86	开口挡圈6	PIN, COTTER	1					
7	ALF4-05070013	起动轮减磨片	WASHER	1					
8	ALF4-05070005	涡簧	SPRING, STARTER	1					
9	ALFF-11050403	绳轮	DRUM, SHEAVE	1					
10	ALF4-05070003	卡瓣	PIN	2					
11	ALF4-05070004	卡瓣弹簧	SPRING, PIN	2					
12	ALF4-05070007	压板夹簧	SPRING, DRIVE PAWL	1					
13	ALF4-05070006	起动压板	SHAFT, STARTER	1					
14	ALF4-05070008	起动压板螺钉	SET SCREW, STARTER PLATE	1					
15	ALF4-05070014	起动减震块	HOLDER, STARTER	1					
16	ALT8-03010012	起动手柄	HANDLE, STARTER	1					
17	ALT8-03010013	起动手柄盖	CAP, HANDLE	1					
18	ALF4-05070009	起动绳	WIRE	1					

YAMABIC

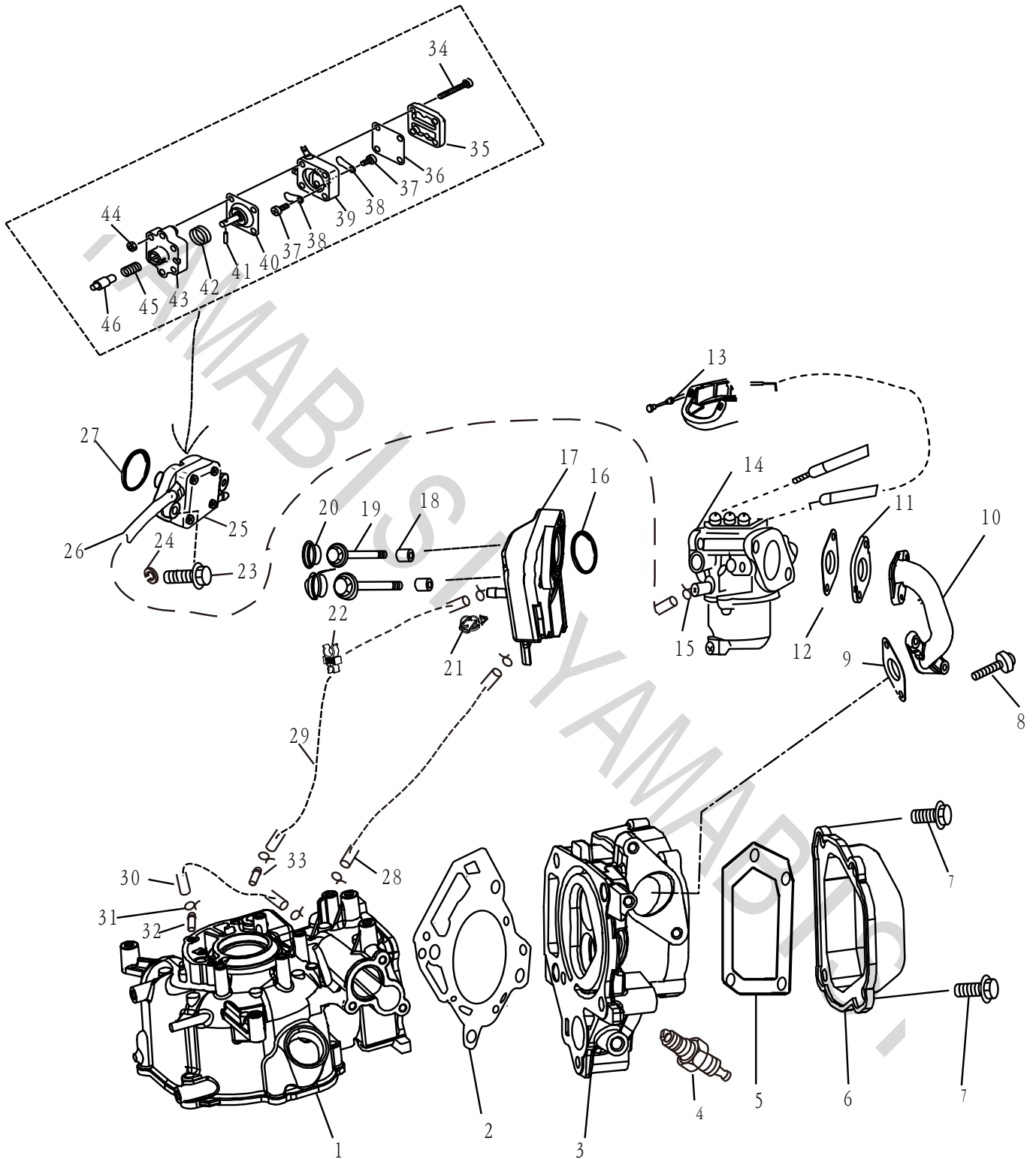


REF. NO. 编号	PART NO. 零件号码	DESCRIPTION 零件名称	DESCRIPTION 零件名称	NEEDED PCS 数量				REMARKS 备注
1	ALF4-05000023	六角螺母M10×1.25	NUT, ROTOR	1				
2	ALF4-05000022	飞轮垫圈	WASHER, ROTOR	1				
3	ALF4-05000021	起动轴套	PULLEY STARTER	1				
4	ALF4-05000500	飞轮	GENERATOR	1				
5	GB/T1099.1-2003	半圆键	KEY, WOODRUFF	1				
6	GB/T5789-2000	六角法兰螺栓M6×25	BOLT, FLANGE	2				
7	ALF4-05000024	点火线圈组件	C. D. I. UNIT ASSY	1				









REF. NO. 编号	PART NO. 零件号码	DESCRIPTION 零件名称	DESCRIPTION 零件名称	NEEDED PCS 数量				REMARKS 备注
1	ALF4-05020001	箱盖	CAP. CRANKCASE	1				
	ALF5-05020001	箱盖	CAP. CRANKCASE	1				

# ALLPASS

F4(F5) 零件手册

PAGE 08 OF 21

零件名称:

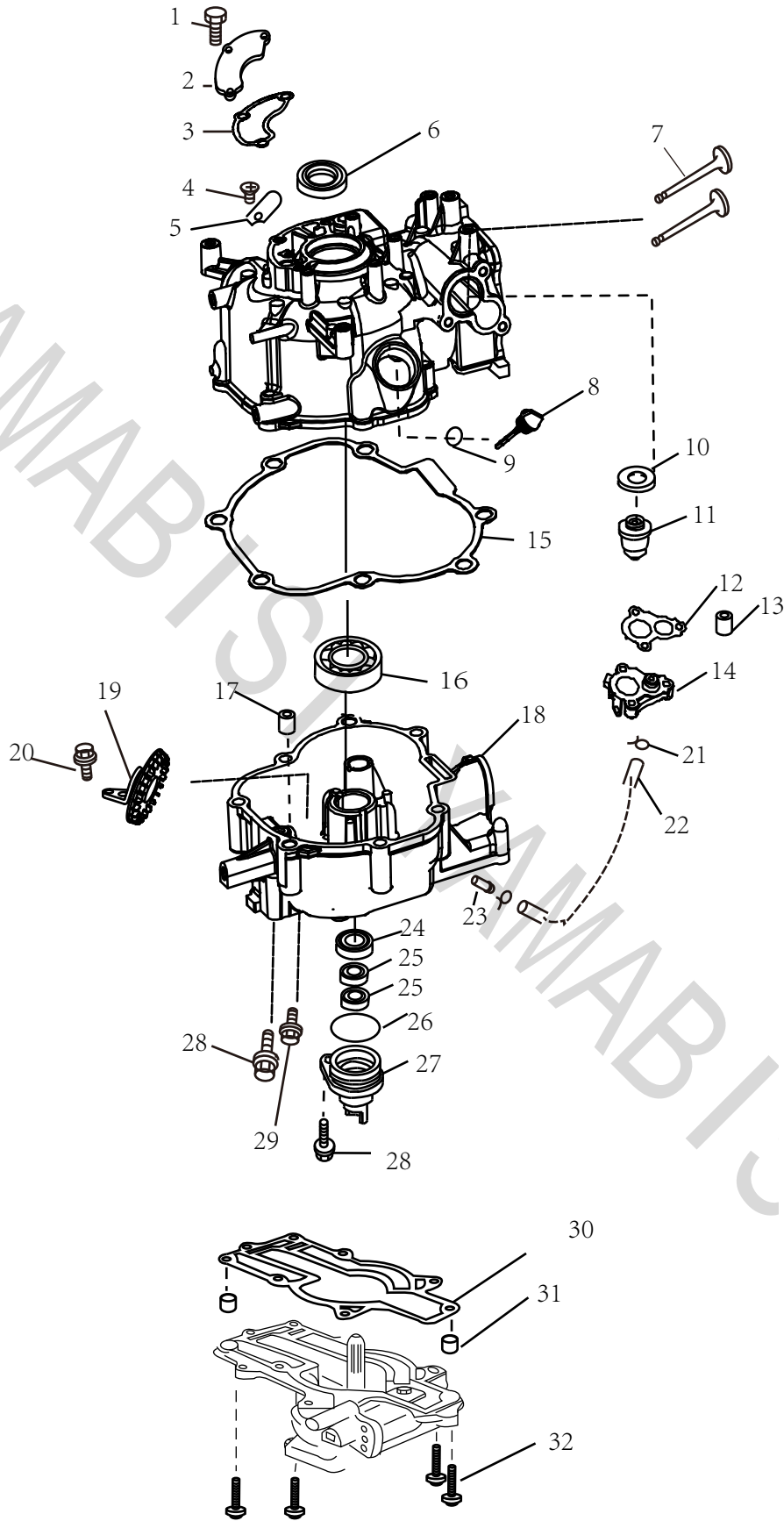
气缸和曲轴箱 1

PARTS NAME:

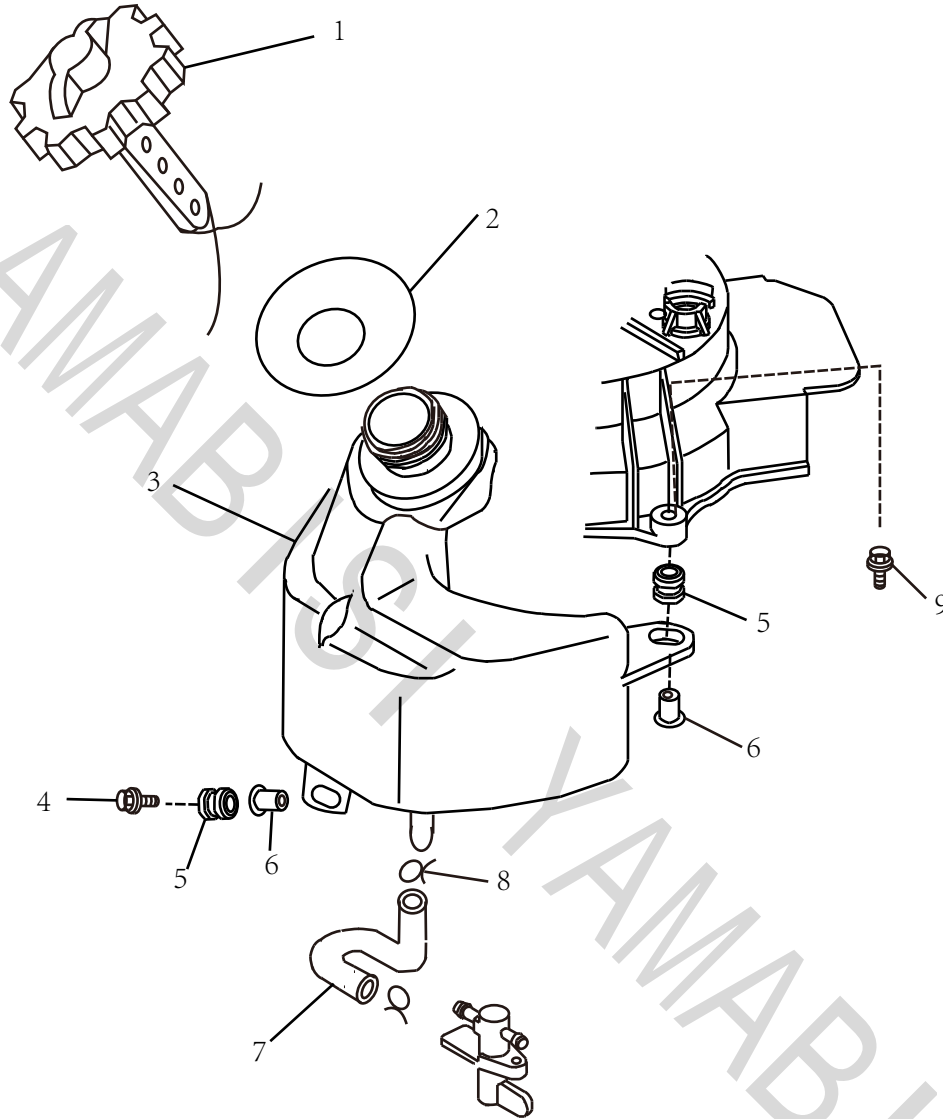
CYLINDER&CRANKCASE 1

REF. NO. 编号	PART NO. 零件号码	DESCRIPTION 零件名称	DESCRIPTION 零件名称	NEEDED PCS 数量					REMARKS 备注
2	ALF4-05000014	缸头复合垫	GASKET, CYLINDER HEAD	1					
3	ALF4-05040000	气缸头组件	HEAD CYLINDER ASSY	1					
4	NGK BPR7HS	火花塞	SPARK PLUG	1					
5	ALF4-05000018	缸头罩密封垫	SEAL GASKET, CAP CYLINDER	1					
6	ALF4-05000019	缸头罩	CAP, HEAD CYLINDER	1					
7	GB/T5789-2000	六角法兰螺栓M6×16	BOLT, FLANGE	4					
8	GB/T5789-2000	六角法兰螺栓M6×25	BOLT, FLANGE	4					
9	ALF4-05000025	进气弯管密封垫	GASKET, AIR PIPE	1					
10	ALF4-05000026	进气管	AIR PIPE	1					
11	ALF4-05000028	化油器垫块	HOLDER, CARBURETOR	1					
12	ALF4-05000027	化油器密封垫	GASKET, CABBURETOR	2					
13	ALF4-00000300	阻风门拉柄组件	HANDLE ASSY	1					
14	ALF4-05000600	化油器	CARBURETOR	1					
15	ALT8-03020005	油管卡簧9.5	GROMMET	4					
16	GB/T3452.1-92	O形密封圈31.2*2.4	O-RING	1					
17	ALF4-05000700	进气消音器组件	SILENCER ASSY	1					
18	ALF4-05000703	进气消音器壳垫管	PIPE, SILENCER	2					
19	GB/T5789-2000	六角法兰螺栓M6×90	BOLT, FLANGE	2					
20	ALF4-05000707	消音器堵塞	STOPPER, SILENCER	2					
21	ALF4-05000705	齿形尼龙卡箍	NYLON LOCK	1					
22	ALF4-05000032	卡簧 A	SPRINGN A	1					
23	GB/T5789-2000	六角法兰螺栓M6×30	BOLT, FLANGE	2					
24	GB/T93-87	弹垫4	WASHER	2					
25	ALF4-05050000	燃油泵组件	FUEL PUMP ASSY	1					
26	ALF4-05000029	油管E5*10*260	FUEL PIPE	1					
27	ALF4-05050010	O形圈27*1.9	O-RING, PUMP BASE	1					
28	ALF4-05000036	回油管3*7*75	FUEL PIPE	1					
29	ALF4-05000033	回气管5*10*175	FUEL PIPE	1					
30	ALF4-05000035	回气管3*7*170	FUEL PIPE	1					
31		油管卡簧6.5	GROMMET	4					
32	ALF4-05000105	水嘴4*3*1	NIPPLE, GREASE	2					
33	ALF15-11010030	气嘴7*6*1	NIPPLE, GREASE	2					
34	GB/T818-2000	十字盘头螺钉M4×25	BOLT, FLANGE	4					
35	ALF4-05050001	燃油泵座	PUMP BASE	1					
36	ALF15-11060006	上隔膜	UPPER STOPPER	1					
37	ALF15-11060005	阀片螺钉3x5	BOLT	2					
38	ALF15-11060004	单向阀片	SCRAP, VALVE	2					
39	ALF4-05050002	燃油泵壳	BODY, PUMP	1					
40	ALF4-05050100	隔膜组件	STOPPER ASSY	1					
41	GB/T273-96	滚针3×12	BEARING	1					
42	ALF4-05050005	隔膜弹簧	PIN, STOPPER	1					
43	GB/T6170-2000	螺母M4	NUT	4					
44	ALF4-11060003	燃油泵盖	CAP, FUEL PUMP	1					
45	ALF4-05050004	柱塞弹簧	SRPING, PLUG	1					
46	ALF4-05050003	柱塞	PLUG	1					

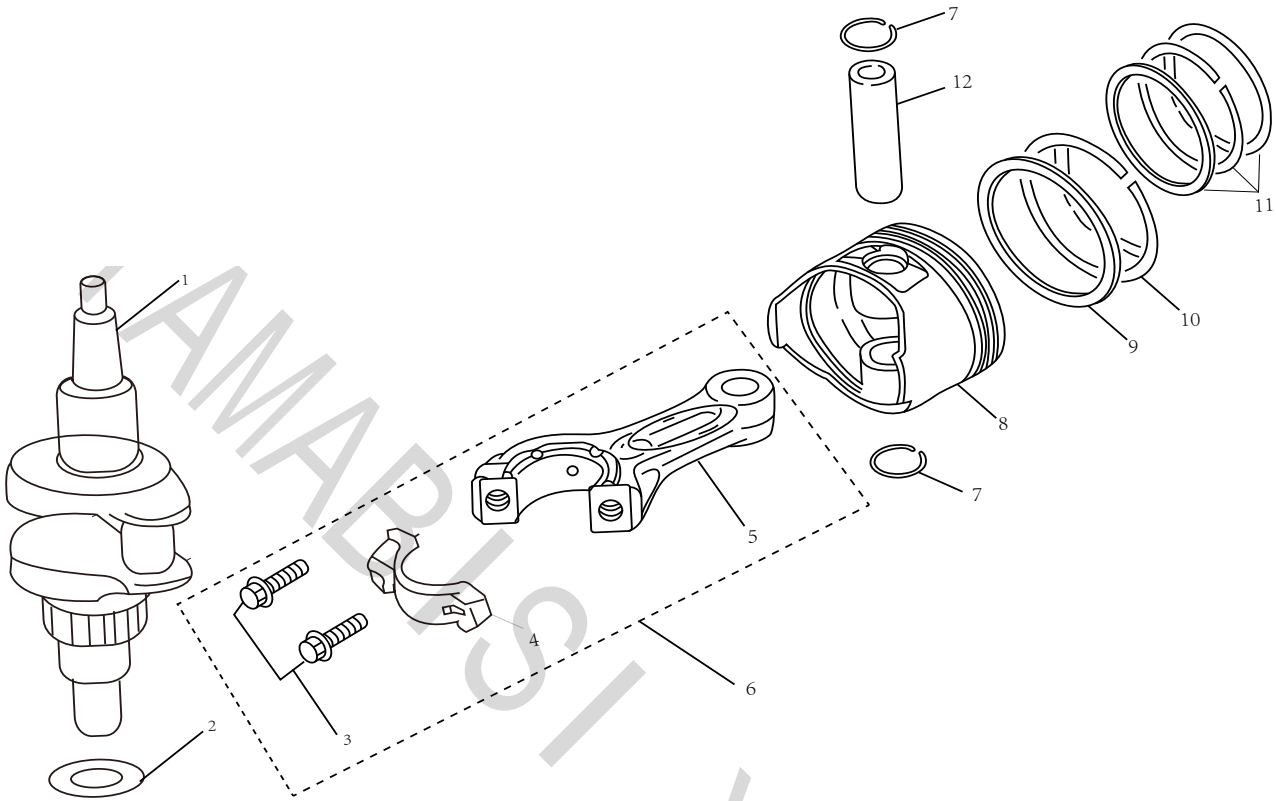
AMABISI YAMABIC



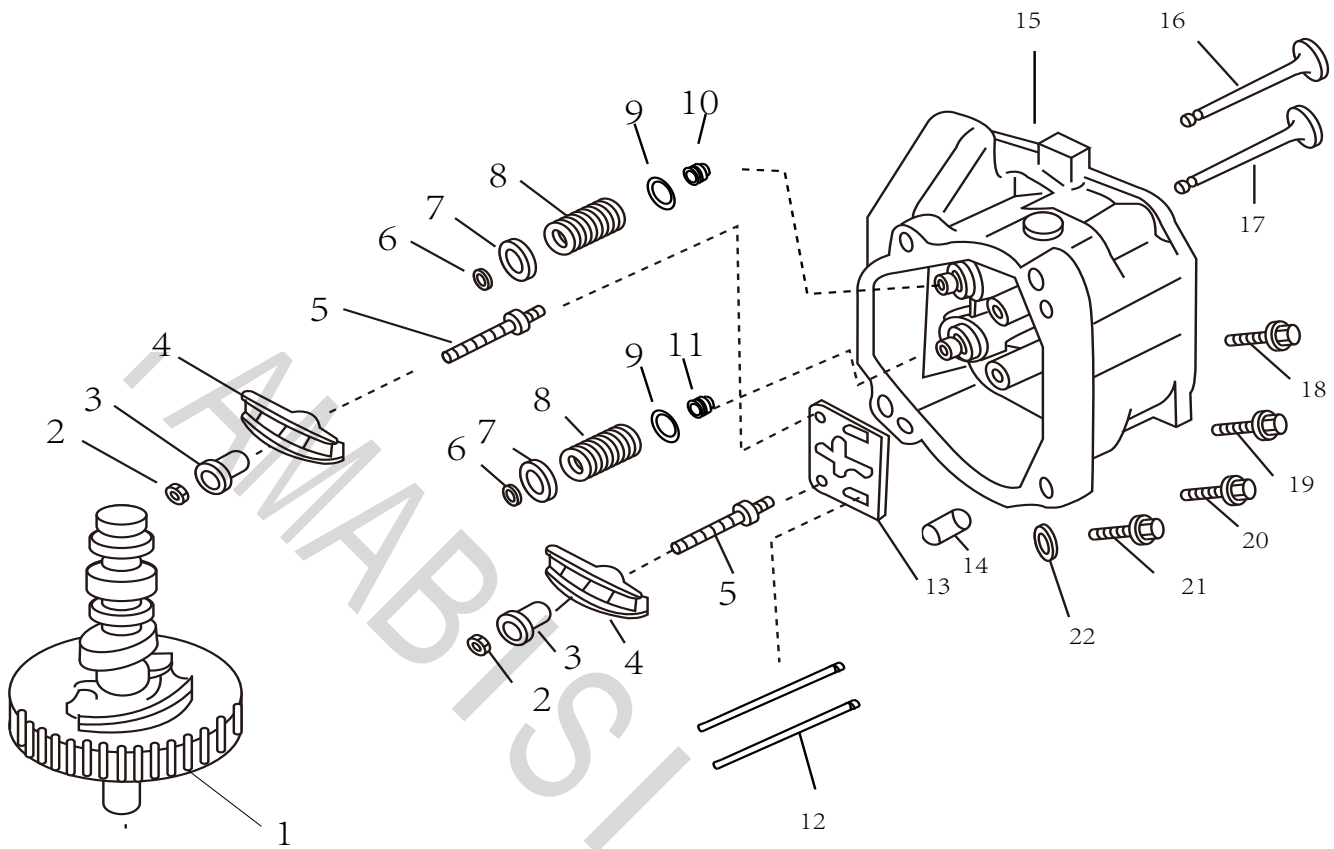




REF. NO. 编号	PART NO. 零件号码	DESCRIPTION 零件名称	DESCRIPTION 零件名称	NEEDED PCS 数量				REMARKS 备注
1	ALT2.5-0100020	油箱盖组件	CAP, ASSY	1				
2	ALF4-05060004	油箱口垫	GASKET, CAP	1				
3	ALF4-05060001	油箱	FUEL TANK COMP	1				
4	GB/T5789-2000	六角法兰螺栓M6*25	BOLT, FLANGE	1				
5	ALF4-05060002	油箱减震器	HOLDER A, FUEL TANK	3				
6	ALF4-05060003	减震器衬管	BUSH, FUEL TANK	3				
7	ALF4-06000002	燃油管A9*13.5*215	FUEL PIPE	1				
8	ALF4-06000007	卡簧13	CROMMET	2				
9	GB/T5789-2000	六角法兰螺栓M6*35	BOLT, FLANGE	2				

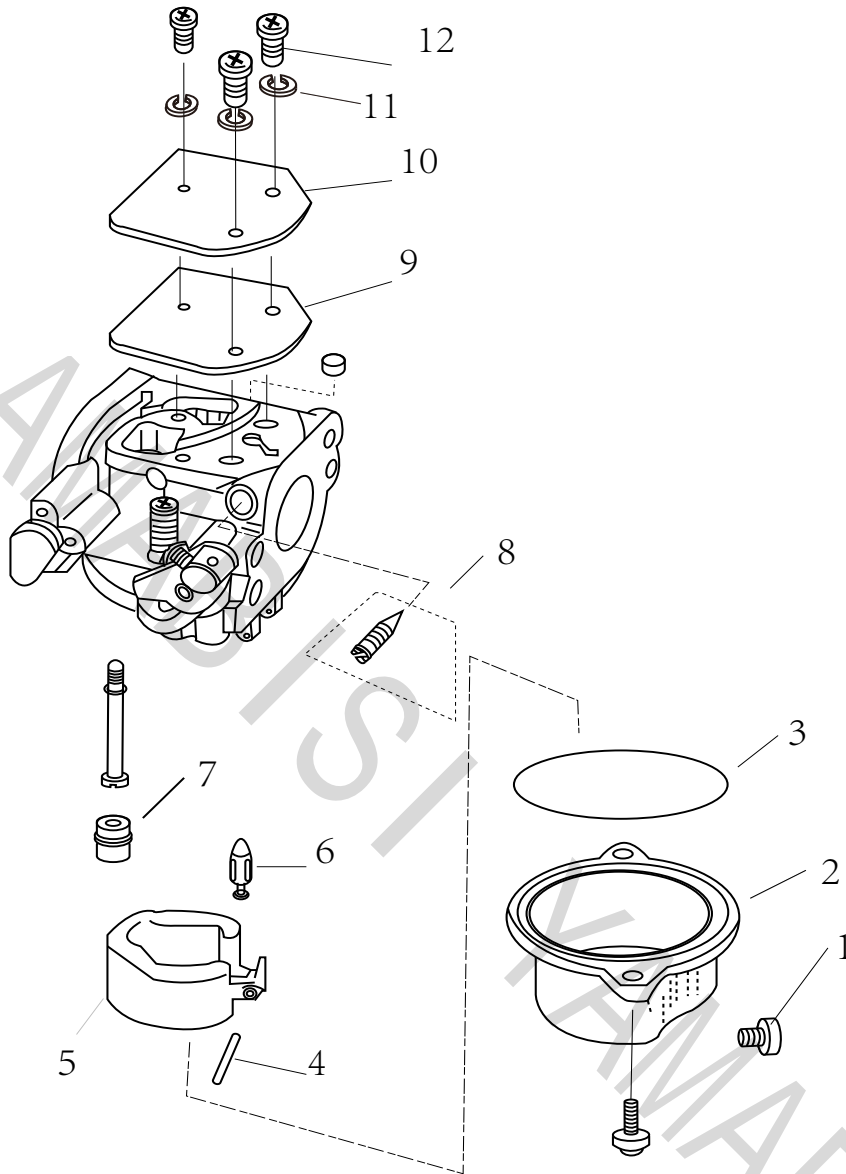


REF. NO. 编号	PART NO. 零件号码	DESCRIPTION 零件名称	DESCRIPTION 零件名称	NEEDED PCS 数量				REMARKS 备注
1	ALF4-05000200	曲轴组件	CRANK ASSY	1				
	ALF5-05000200	曲轴组件	CRANK ASSY	1				
2	ALF4-05000002	箱盖减磨片	CAP CRANKCASE WASHER	1				
3	ALF4-05010103	连杆螺栓M7x35	BOIL FLANGE	2				
4	ALF4-05010102	连杆盖	CAP ROD, CONNECTING	1				
5	ALF4-05010101	连杆体	ROD CONNECTING	1				
6	ALF4-05010100	连杆组件	ROD, CONNECTING ASSY	1				
7	ALF4-05010006	活塞销卡簧	CIRCLIP	2				
8	ALF4-05010001	活塞	PISTON	1				
9	ALF4-05010002	活塞气环1	RING, PISTON 1	1				
	ALF5-05010002	活塞气环1	RING, PISTON 1	1				
10	ALF4-05010003	活塞气环2	RING, PISTON 2	1				
	ALF5-05010003	活塞气环2	RING, PISTON 2	1				
11	ALF4-05010004	活塞组合油环	RING, PISTON ASSY	1				
	ALF5-05010004	活塞组合油环	RING, PISTON ASSY	1				
12	ALF4-05010005	活塞销	PIN, PISTON	1				

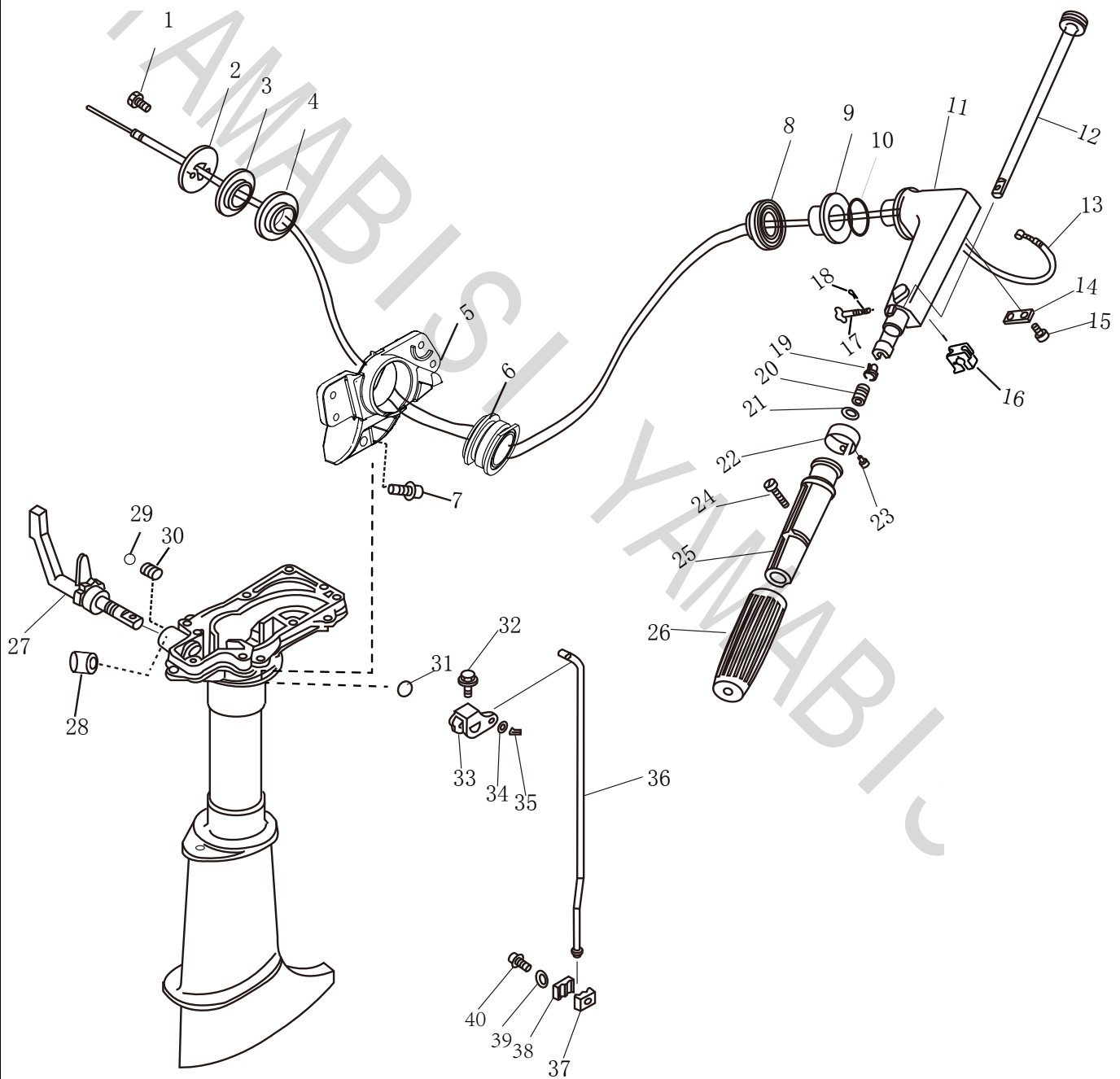


REF. NO. 编号	PART NO. 零件号码	DESCRIPTION 零件名称	DESCRIPTION 零件名称	NEEDED PCS 数量				REMARKS 备注
1	ALF4-05000300	凸轮轴组件	PRESSURE ASSY	1				
2	ALF4-05040007	锁紧螺母M6×0.75	LOCKING NUT	2				
3	ALF4-05040008	摇臂球座	BASE, ROD	2				
4	ALF4-05040009	摇臂	ROD	2				
5	ALF4-05040010	摇臂螺杆	ROD, SWING	2				
6	ALF4-05040011	气门锁片	LOCK, VALVE	2				
7	ALF4-05040003	气门弹簧垫圈	GASKET, VALVE	2				
8	ALF4-05040004	气门弹簧	SPRING, VALVE	2				
9	ALF4-05040006	气门弹簧座	SPRING BASE	2				
10	ALF4-05040103	进气门座圈	RING, INTAKE BASE	1				
11	ALF4-05040104	排气门座圈	RING, OUTLET BASE	1				
12	ALF4-05000015	气门推杆	ROD, VALVE	2				
13	ALF4-05040005	导向板	GUIDE PLATE	1				
14	ALF15-11000001	空心定位销	COTTER PIN	2				
15	ALF4-05040101	气缸头	HEAD CYLINDER	1				
16	ALF4-05040001	进气门	VALVE, INTAKE	1				
17	ALF4-05040002	排气门	VALVE, OUTLET	1				
18	GB/T5789-2000	六角法兰螺栓M8*60	BOLT, FLANGE	3				
19	GB/T5789-2000	六角法兰螺栓M8*40	BOLT, FLANGE	1				
20	GB/T5789-2000	六角法兰螺栓M8*45	BOLT, FLANGE	1				
21	GB/T5789-2000	六角法兰螺栓M8*12	BOLT, FLANGE	1				
22	ALT8-07000001	放油螺栓密封垫	WASHER	1				

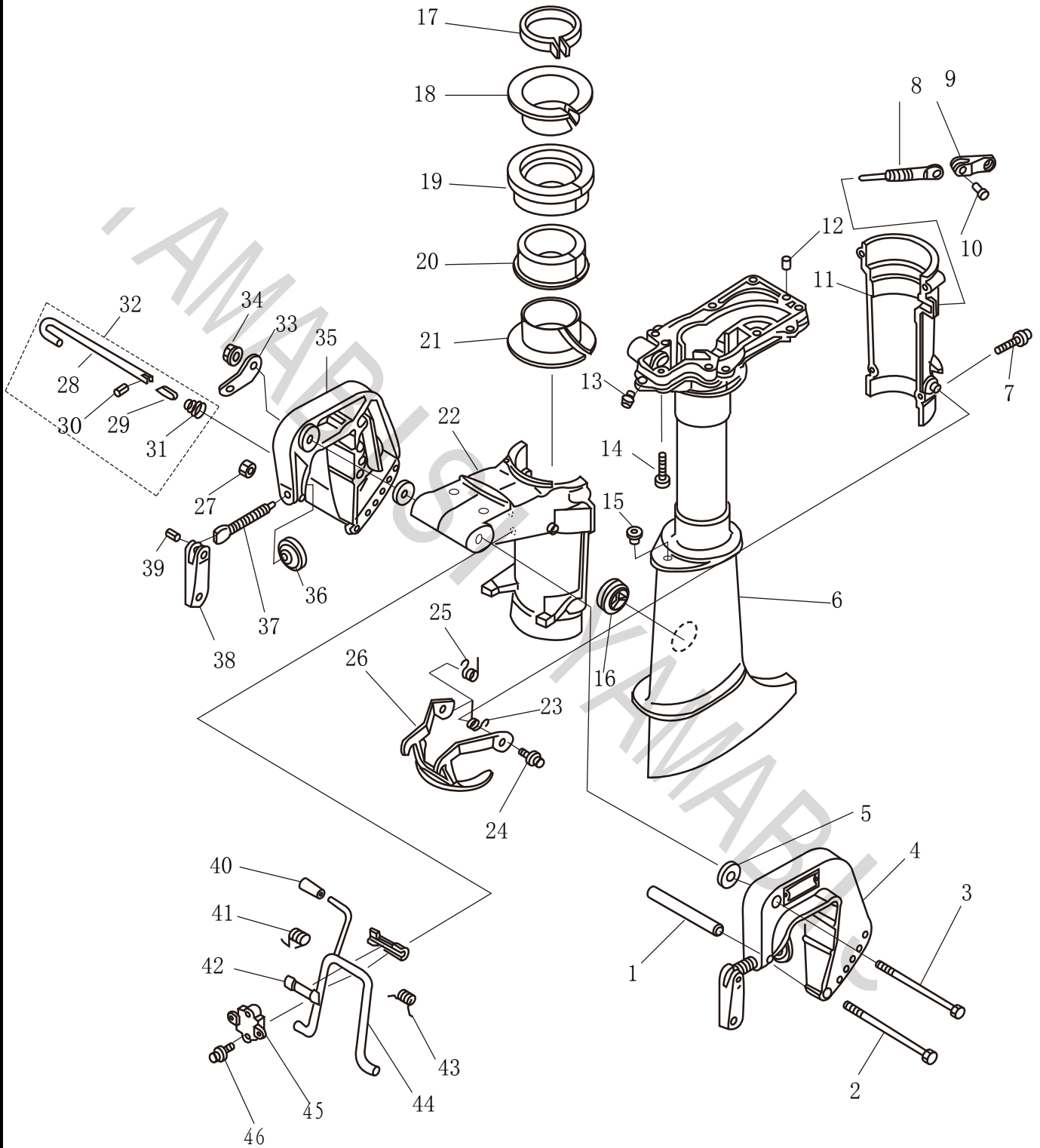




REF. NO. 编号	PART NO. 零件号码	DESCRIPTION 零件名称	DESCRIPTION 零件名称	NEEDED PCS 数量				REMARKS 备注
1	ALF4-05000601	O形圈	O-RING	1				
2	ALF4-05000602	浮子室	BOOY FLOAT	1				
3	ALF4-05000603	浮子室密封圈	GASKET FLOAT CHAMBER	1				
4	ALF4-05000604	浮子销	PIN FLOAT ARM	1				
5	ALF4-05000605	浮子	FLOAT	1				
6	ALF4-05000606	针阀	VALVE NEEDLE	1				
7	ALF4-05000607	主量孔	JET MAIN	1				
8	ALF4-05000608	顶盖橡胶垫	GASKET	1				
9	ALF4-05000609	怠速螺栓	SCREW PILOT	1				
10	ALF4-05000610	顶盖	CAP TOP	1				
11	GB/T818-2000	十字盘头螺钉M4*10	BOLT, PAD HEAD	6				
12	GB/T93-87	弹垫4	WASHER	6				







# ALLPASS

F4(F5) 零件手册

PAGE 18 OF 21

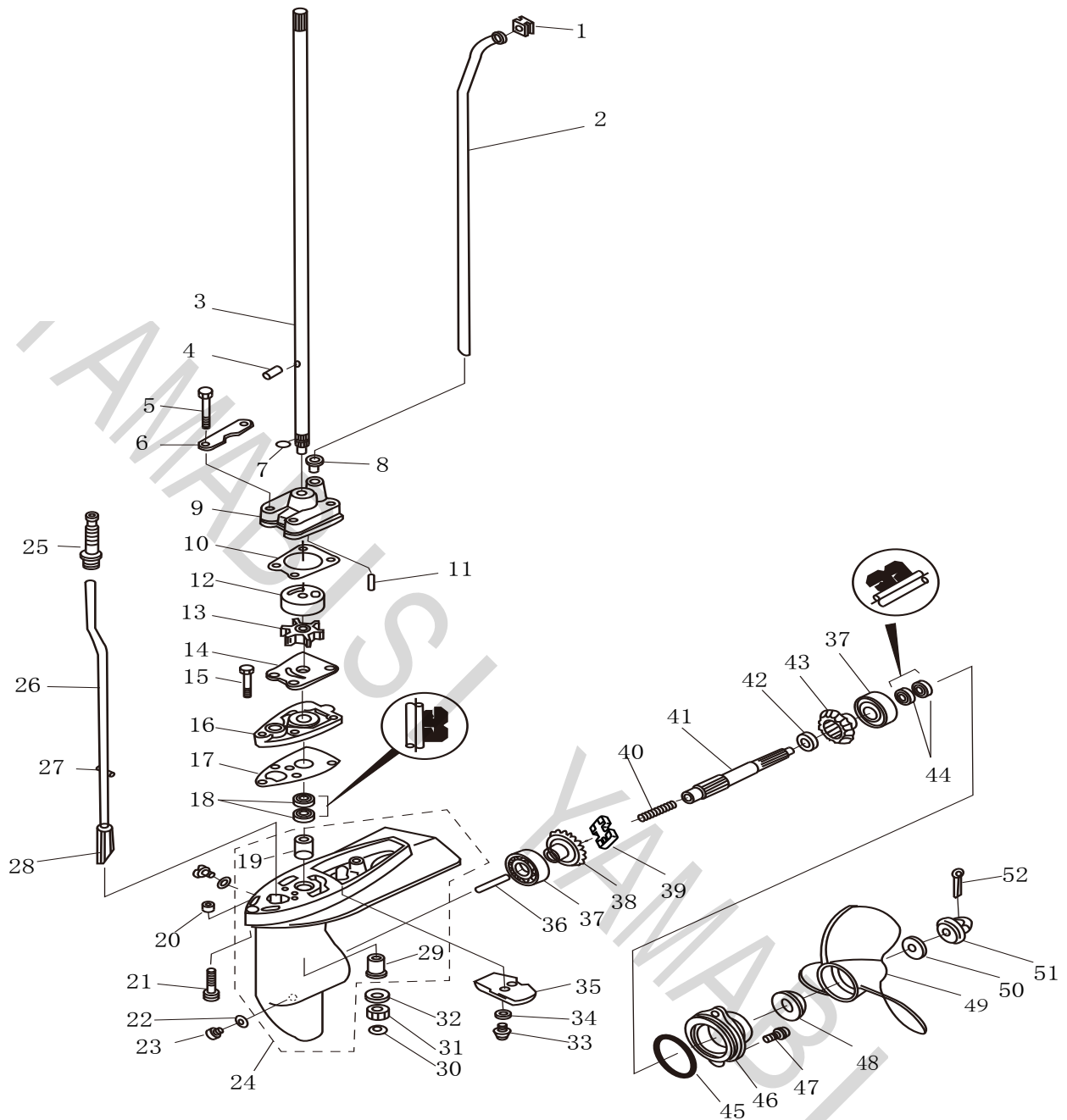
零件名称:

托架和水上装置

PARTS NAME:

BRACKET&UPPER CASING

REF. NO. 编号	PART NO. 零件号码	DESCRIPTION 零件名称	DESCRIPTION 零件名称	NEEDED PCS 数量					REMARKS 备注
1	ALF4-00000003	螺栓垫管	NUT, WASHER	1					
2	GB/T5789-2000	六角法兰螺栓M6*120	BOLT, FLANGE	1					
3	GB/T5789-2000	六角法兰螺栓M8*135	BOLT, FLANGE	1					
4	ALF4-00000010	右夹紧支架	BRACKET, CLAMP1	1					
5	ALF4-00000002	尼龙垫片30*8.5*2	NYLON WASHER	2					
6	ALF4-05000001	水上装置壳体	CASING, UPPER	1					
7	GB/T5789-2000	六角法兰螺栓M6*35	BOLT, FLANGE	6					
8	ALF4-04000101	锁紧螺栓	LOCKING BOLT	1					
9	ALF4-04000102	锁紧螺栓手柄	LOCKING BOLT HANDLE	1					
10	GB/T875-86	铆钉销5*8	PIN, PAD HEAD	1					
11	ALF4-04000001	旋转支架盖	BRACKET, PIVOT SHAFT	1					
12	ALF4-00000008	空心定位销9*6.5*10	PIN	2					
13	ALT8-05000014	注油嘴M6	FUEL COCK	1					
14	GB/T5789-2000	六角法兰螺栓M6*32	BOLT, FLANGE	7					
15	ALT2.5-02000020	护线套	BUSHING, WIRE	1					
16	ALF4-02000010	水下装置堵头	STOPPER, CASING LOWER	1					
17	ALF4-02000200	水下装置锁紧组件	LOCKING ASSY, CASING LOWE	1					
18	ALF4-02000007	上减震圈衬套	SHEAVE, BUSH UPPER	1					
19	ALF4-02000006	上减震圈	BUSH, UPPER	1					
20	ALF4-02000008	下减震圈	BUSH, LOWER	1					
21	ALF4-02000009	下减震圈衬套	SHEAVE, BUSH LOWER	1					
22	ALF4-01000001	旋转支架座	CAP, BRACKET SWIVEL	1					
23	ALF4-04000003	锁紧勾钮簧(右)	SPRING B, LOCKING	1					
24	GB/T5789-2000	六角法兰螺栓M6*10	BOLT, FLANGE	2					
25	ALF4-04000002	锁紧勾钮簧(左)	SPRING A, LOCKING	1					
26	ALF4-04000200	锁紧勾	LOCKING	1					
27	GB/T6170-86	六角螺母M6	HEX NUT	1					
28	ALF4-00000201	角度调节杆	ANGLE KNOB	1					
29	ALF4-00000203	防脱落支架	PIVOT SHAFT	1					
30	GB879-86	弹性圆柱销	PIN, SPRING	1					
31	ALF4-00000202	塔型弹簧	SPRING	1					
32	ALF4-00000200	角度调节杆组件	ANGLE KNOB ASSY	1					
33	ALT8-05000012	双孔固定板	PLATE, DOUBLE HOLE	1					
34	GB/T6170-86	六角锁紧螺母M8	BOLT, FLANGE	1					
35	ALF4-00000201	夹紧托架(左)	BRACKET, CLAMP2	1					
36	ALT8-05000205	艀板圆盘	PAD, TRANSOM CLAMP	2					
37	ALT8-05000202	艀板夹紧螺钉	SCREW, TRANSOM CLAMP	2					
38	ALT8-05000204	艀板夹紧手柄	HANDLE, TRANSOM CLAMP	2					
39	ALT8-05000203	铆钉4*22	PIN	2					
40	ALF4-02000103	支撑架手柄套	GRIP, BRACKET HANDLE	1					
41	ALF4-01000003	支撑架钮簧(左)	SPRING A, BRACKET	1					
42	ALF4-01000002	支撑架尼龙衬套	NYLON BUSH, BRACKET	1					
43	ALF4-04000200	起翘锁紧钩组件	BRACKET	1					
44	ALF4-01000004	支撑架钮簧(右)	SPRING B, BRACKET	1					
45	ALF4-01000005	支撑架固定盖	CAP, BRACKET	1					
46	GB/T6170-86	六角法兰螺栓M6*20	BOLT, FLANGE	2					



REF. NO. 编号	PART NO. 零件号码	DESCRIPTION 零件名称	DESCRIPTION 零件名称	NEEDED PCS 数量				REMARKS 备注
1	ALT2.5-07000021	工型橡胶圈	RING, RUBBER	1				
2	ALF4-03000028S	进水管(短)	PIPE S	1				
	ALF4-03000028L	进水管(长)	PIPE L	2				
3	ALF4-03000004S	传动轴(短)	DRIVE SHAFT S	1				
	ALF4-03000005L	传动轴(长)	DRIVE SHAFT L	2				
4	GB/T119.1-2000	定位销3.5*9	PIN, COTTER	1				
5	GB/T5789-2000	六角法兰螺栓M6*45	BOLT, FLANGE	4				
6	ALF4-03000020	水泵壳固定板	LOCKING PLATE, PUMP BODY	2				
7	ALF4-03000005	轴用开口挡圈	PIN COPPER, SHAFT	1				
8	ALT2.5-07000022	泵壳橡胶管套	BUSH, PUMP PIPE	1				

# ALLPASS

F4(F5) 零件手册

PAGE 20 OF 21

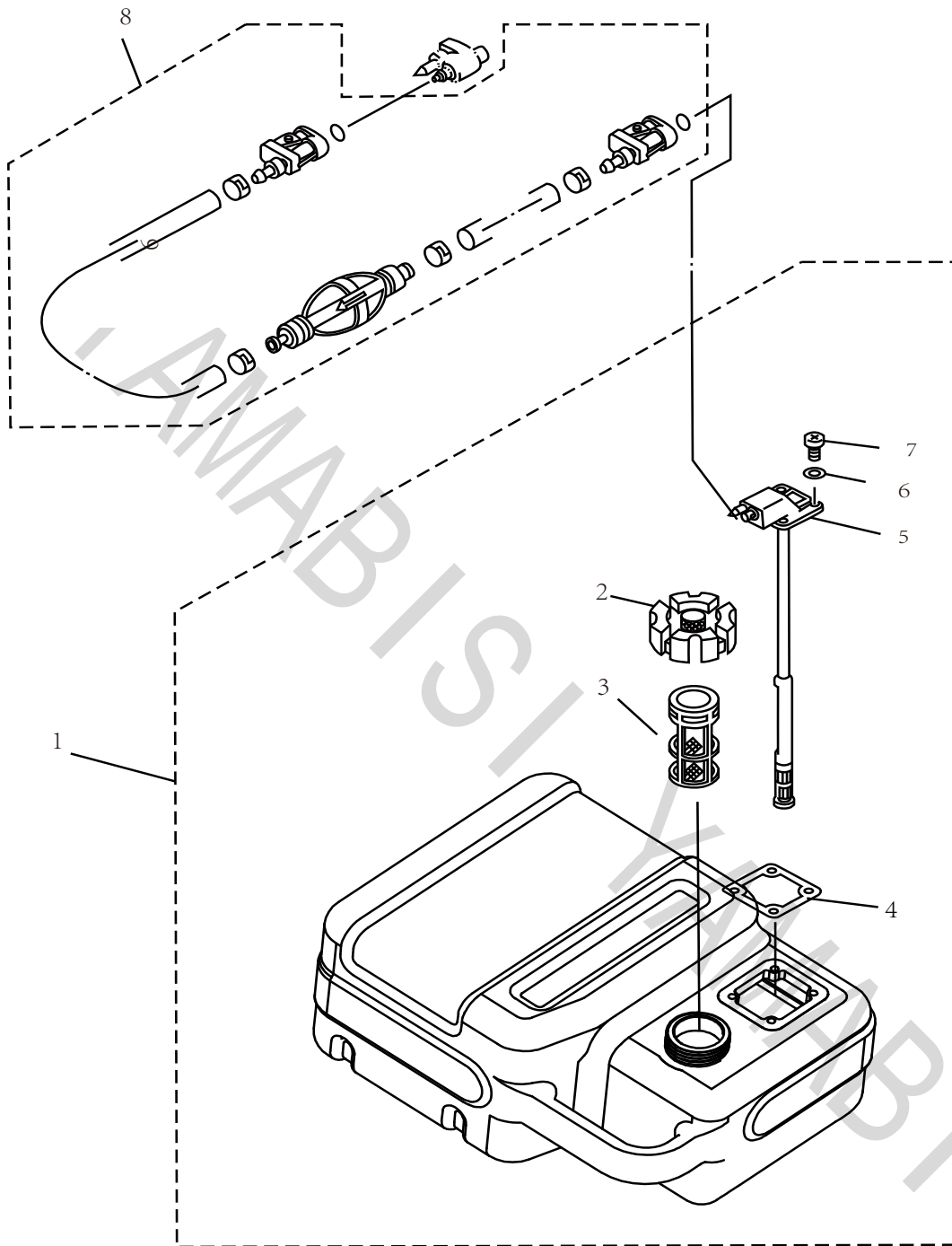
零件名称:

水下装置和驱动系统

PARTS NAME:

LOWER CASING&DRIVE

REF. NO. 编号	PART NO. 零件号码	DESCRIPTION 零件名称	DESCRIPTION 零件名称	NEEDED PCS 数量					REMARKS 备注
9	ALF4-03000019	水泵壳	WATER PUMP BODY	1					
10	ALF4-03000018	水泵壳密封垫	GASKET, WATER PUMP BODY	1					
11	GB/T119. 1-2000	定位销4*18	PIN	2					
12	ALF4-03000017	水泵内胆	CARTRIDGE, WATER PUMP	1					
13	ALF4-03000600	水泵叶轮	IMPELLER	1					
14	ALF4-03000015	外挡板	OUTER FLANGE	1					
15	GB/T5789-2000	六角法兰螺栓M6*25	BOLT, FLANGE	1					
16	ALF4-03000019	水泵座	WATER PUMP BASE	1					
17	ALF4-03000018	水泵座垫	GASKET, WATER PUMP BASE	1					
18	ALF4-05000403	油封10.8*21*7	OIL SEAL	2					
19	ALF4-03000003	不带档边铜套	COPPER BUSH A	1					
20	ALF4-00000008	空心定位销9*6.5*10	PIN	2					
21	GB/T5789-2000	六角法兰螺栓M6*40	BOLT, FLANGE	2					
22	GB/T5789-2000	六角法兰螺栓M8*9	BOLT, FLANGE	3					
23	ALT8-07000001	注油孔密封垫	WASHER	3					
24	ALF4-03000001	水下壳体	CASING, LOWER	1					
25	ALF4-03000014	变档橡胶护套	SHAFT, CAM PROTECTOR	1					
26	ALF4-03000201S	变档凸轮轴(短)	SHAFT, CAM	1					
	ALF4-03000202L	变档凸轮轴(长)	SHAFT, CAM	2					
27	GB879-86	弹性圆柱销	PIN, SPRING	1					
28	ALF4-03000202	变档凸轮	GEAR, SHIFT	1					
29	ALT2.5-07000026	带档边铜套	COPPER BUSH B	1					
30	GB/T861. 1-87	开口档圈6	CIRCLIP	1					
31	ALF4-03000007	主动齿轮	PINION	1					
32	ALF4-03000006	主动齿轮垫圈	WASHER, PINION	1					
33	GB/T5789-2000	六角法兰螺栓M6*16	BOLT, FLANGE	1					
34	GB/T861. 1-87	内齿垫圈6	WASHER	1					
35	ALT2.5-07000024	阳极	ANODE	1					
36	ALF4-03000009	变档柱塞	PLUNGER, SHIFT	1					
37	GB/T276-96	轴承6004	BEARING	2					
38	ALF4-03000100	正档齿轮	GEAR 1	1					
39	ALF4-03000302	离合器块	CLUTCH BLOCK	1					
40	ALF4-02000003	变档弹簧	SPRING, COMPRESSION	1					
41	ALF4-03000301	螺旋桨轴	SHAFT, PROPELLER	1					
42	ALF4-03000010	倒档齿轮垫圈	WASHER, GEAR 2	2					
43	ALF4-03000400	倒档齿轮	GEAR 2	1					
44	ALF4-03000502	油封13*22*7	OIL SEAL	2					
45	GB/T3452. 1-92	O型圈47. 1*3. 5	O-RING	1					
46	ALF4-03000501	水下壳体盖	CAP, CASING LOWER	1					
47	GB/T5789-2000	六角法兰螺栓M6*16	BOLT, FLANGE	2					
48	ALF4-03000025	螺旋桨垫块	BLOCK, PROPELLER	1					
49	ALF4-03000700	螺旋桨	PROPELLER	1					
50	ALF4-03000026	螺旋桨垫片	WASHER, PROPELLER	1					
51	ALF4-03000800	螺母组件	NUT, ASSY	1					
52	GB/T91-2000	开口销2.5*30	PIN. COTTER	1					



REF. NO. 编号	PART NO. 零件号码	DESCRIPTION 零件名称	DESCRIPTION 零件名称	NEEDED PCS 数量					REMARKS 备注
1	ALT8-10000100	燃油箱组合	FUEL TANK ASSY (12L)	1					
2	ALT8-09000200	油箱盖总成	CAP ASSY	1					
3	ALT8-09000001	油箱滤网	FUEL METER ASSY	1					
4	ALT8-09000002	密封衬垫	SEAL	1					
5	ALT4-09000300	油量表组合	FUEL METER ASSY	1					
6	GB/T97.1-85	平垫片5	WASHER	4					
7	GB/T818-94	十字盘头螺钉M5*20	SCREW, PAN HEAD	4					
8	ALT8-09000400	燃油管组件	FUEL PIPE COMP. 1	1					