

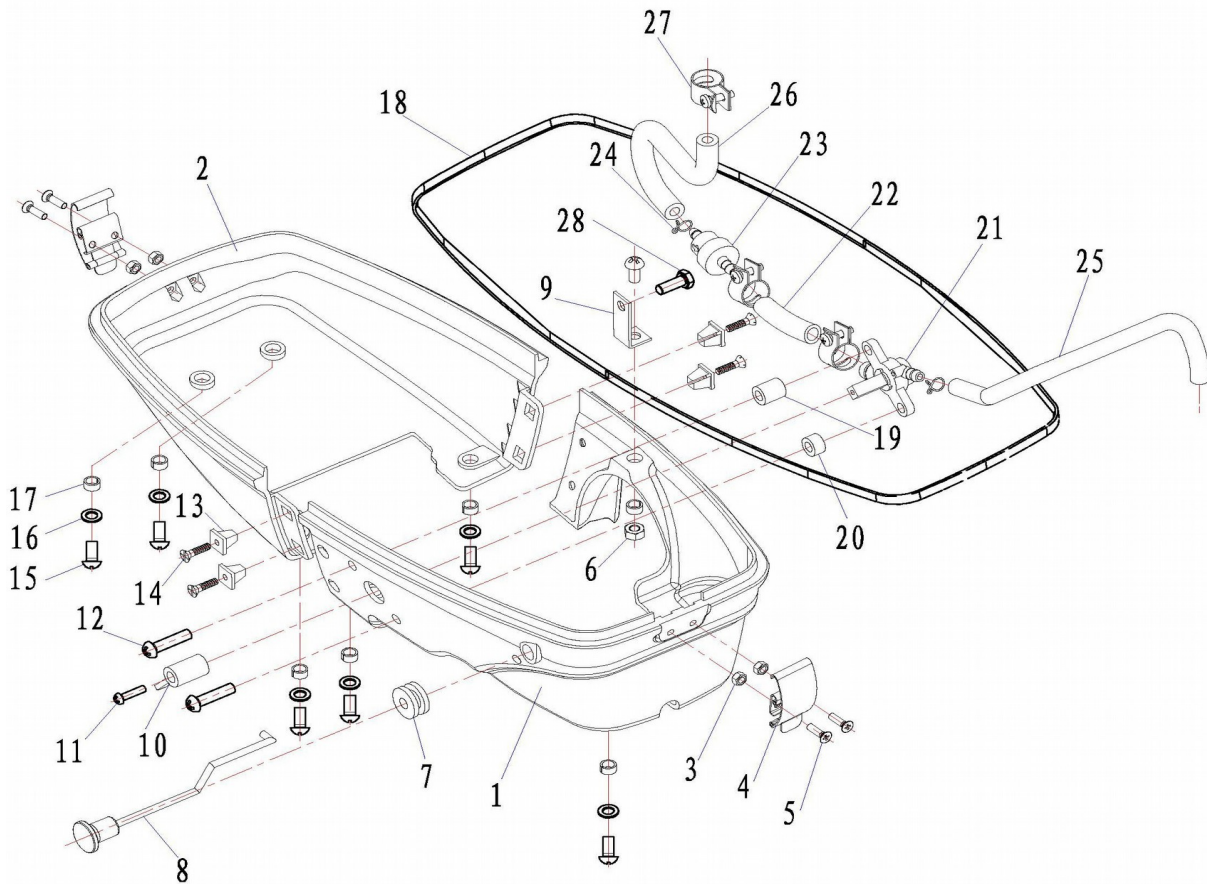
Мотор Hidea HD3.5F new заказ запчастей www.riverplanet.ru

1	Bottom Cover
2	Recoil starter
3	Powering System
4	Swivel Bracket
5	Waterborne Parts
6	Lower unit



HD3. 5F

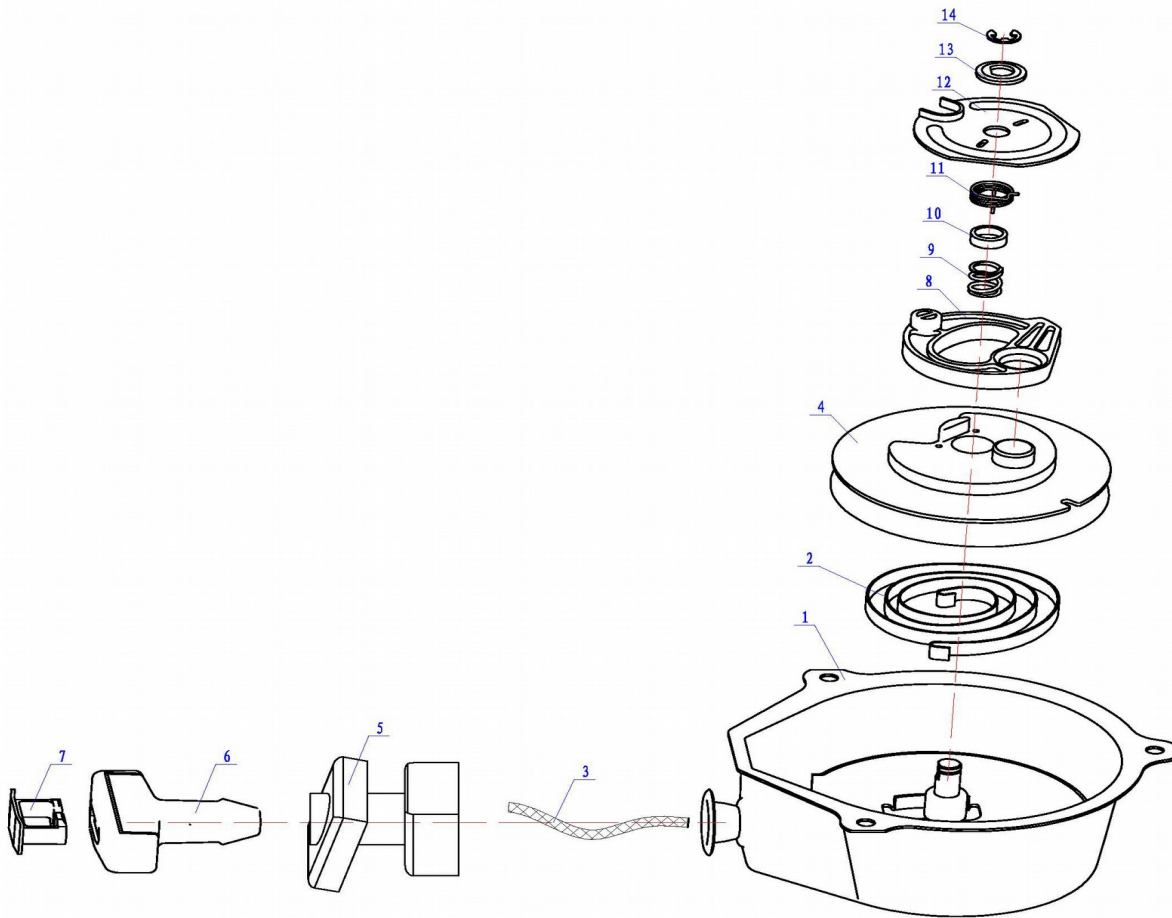
Bottom Cover



REF NO	PART CODE	DESCRIPTION (EN)	Q'TY
1	3.5F-III-02.01.01	bottom cover (front)	1
2	3.5F-III-02.01.02	bottom cover (rear)	1
3	GB/T6170	nut	4
4	F4-02.18.00	handle Assy.	2
5	GB/T819	cross recessed head screw	4
6	GB/T6170	nut	1
7	9.8F-02.04	protecting bush, choke	1
8	3.5F-II-07.07.00	handle, choke	1
9	3.5F-III-02.01.03	side bracket	1
10	F4-01.07.05.01	Oil switch knob	1
11	GB/T818-85	cross recess pan head screw	1
12	GB/T818-85	cross recess pan head screw	2
13	3.5F-II-02.16	stud screw	4
14	GB/T846	cross recessed head screw	4
15	GB/T818	cross recess pan head screw	7
16	GB/T848	washer	6
17	3.5F-II-02.01.06	open pad pipe	7
18	3.5F-II-02.01.03	sealing strip	1
19	3.5F-II-01.04.03.03	tube	1

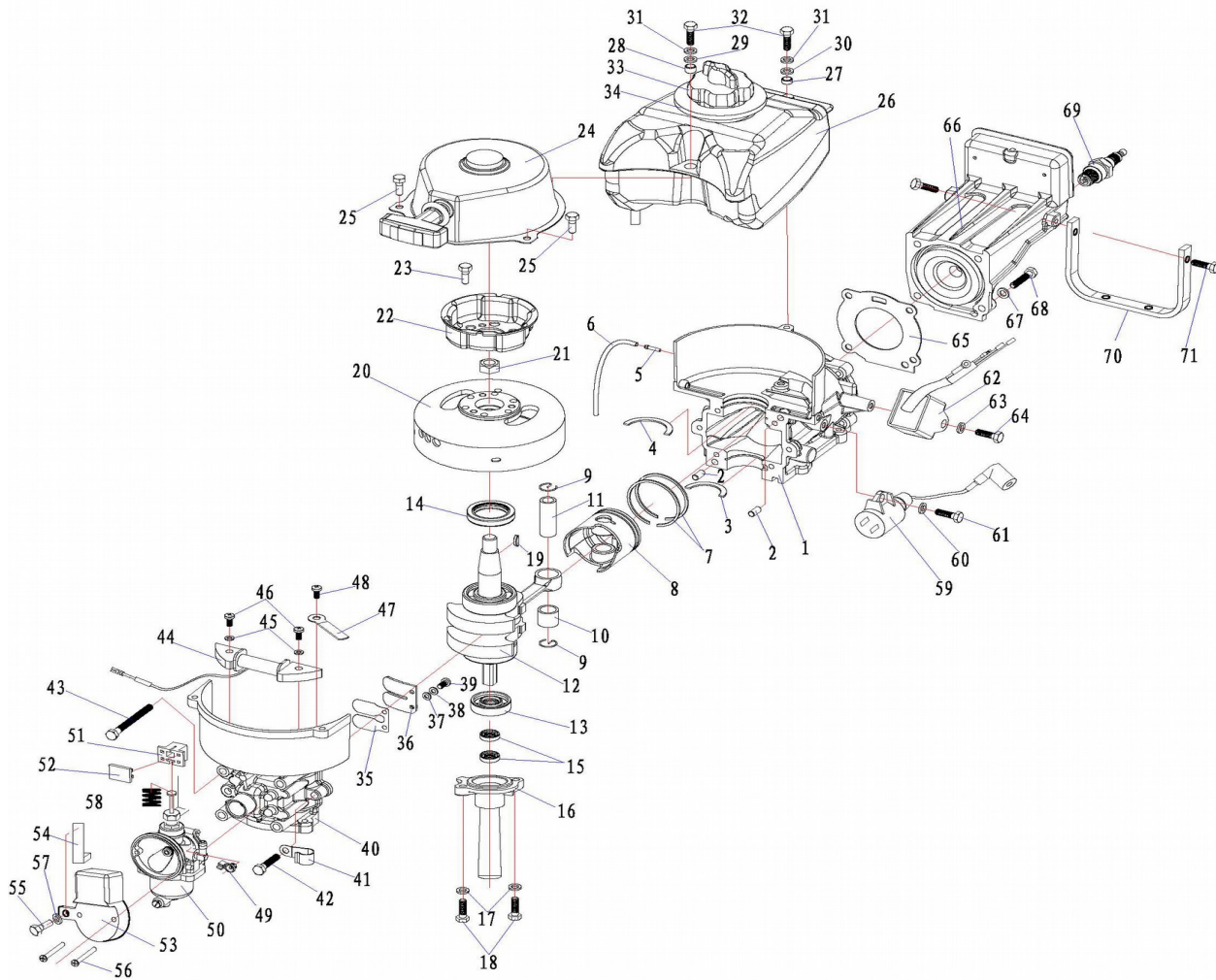
20	3.5F-II-01.04.03.04	tube	1
21	F4-01.07.05-02-II	Oil switch assembly	1
22	3.5F-III-01.04.06.01	fuel pipe	1
23	F4-01.07.08.00	fuel filter	1
24		pipe clamp 10	2
25	3.5F-III-01.04.06.02	fuel pipe	1
26	3.5F-III-01.04.02.06	fuel pipe	1
27	3.5F-01.04.05.00	Clamp assy.	3
28	GB/T5783	hexagon headed bolt M6×16	1

Recoil Starter



REF NO	PART CODE	DESCRIPTION (EN)	Q'TY
1	3.5F-01.02.01.00	Starter cover	1
2	3.5F-01.02.12	volute spring	1
3	3.5F-01.02.04	starting rope	1
4	3.5F-01.02.03	starting wheel	1
5	9.8F-01.01.11.01	Rubber damper	1
	3.5F-01.01.07-II	Starter rubber sleeve	
6	15F-01.01.08	Starter handle	1
7	15F-01.01.10	Handle cover	1
8	3.5F-01.02.11	Starter Device	1
9	3.5F-01.02.10	Compressing spring	1
10	3.5F-01.02.09	Torsional spring ring	1
11	3.5F-01.02.08	torsional spring	1
12	3.5F-01.02.07	locking hold-down plats assembly	1
13	3.5F-01.02.06	waterform gasket ring	1
14	GB/T896	split washer	1

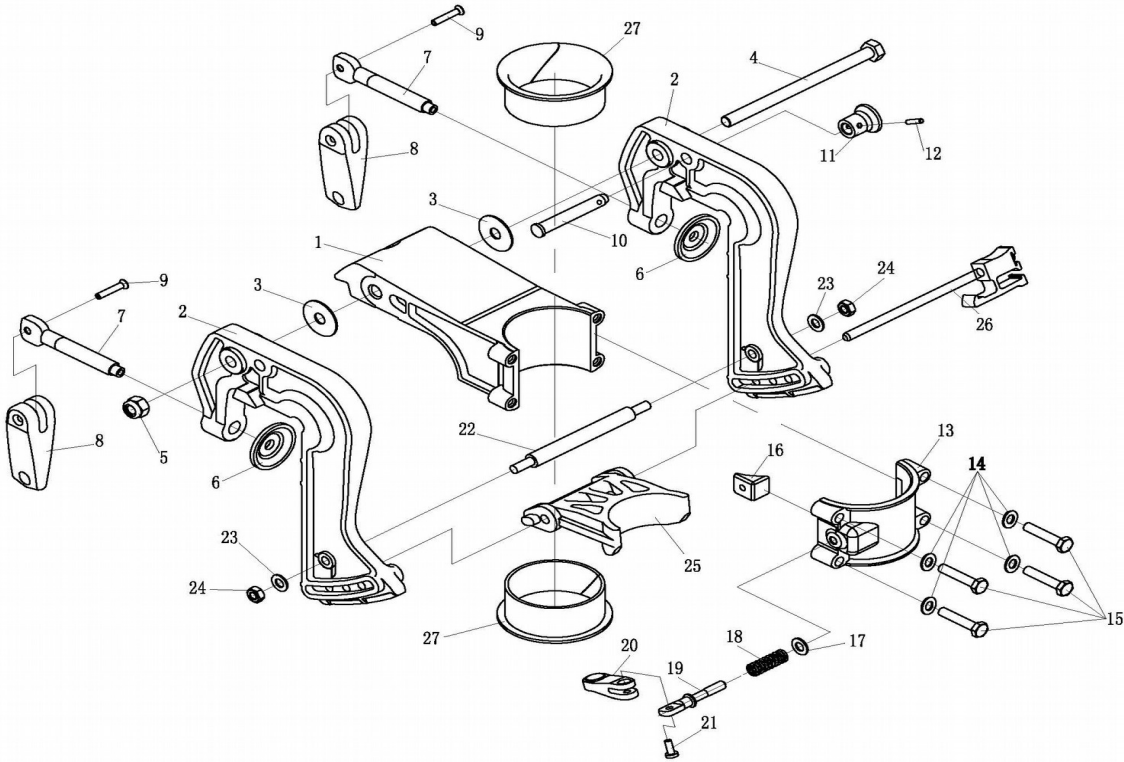
Powering System



REF NO	PART CODE	DESCRIPTION (EN)	Q'TY
1	3.5F-III-01.01.01.01	tank body	1
2	15F-01.06.20	Location pin	2
3	3.5F-III-01.01.10	U shape block ring	1
4	3.5F-01.01.09	U shape block ring	1
5	15F-01.06.21	Round joint,air pipe B	1
6	3.5F-01.01.01.04	water pipe	1
7	3.5F-01.01.11.05	Piston ring	2
8	3.5F-01.01.11.01	piston	1
9	3.5F-01.01.11.04	piston pin clamping spring	2
10	3.5F-01.01.11.03	bearing ,needle roller	1
11	3.5F-01.01.11.02	piston pin	1
12	3.5F-III-01.01.11.00	crank connection rod assembly	1
13	3.5F-III-01.01.08	oil seal under crankshaft	1
14	3.5F-01.01.07	oil seal upper crankshaft	1
15	F2.5-01.01.00.06	oil seal	2
16	3.5F-III-01.01.18	oil seal body	1
17	GB/T848	flat gasket6	2

18	GB/T5783	Hexagonal head bolt M6*18	2
19	3.5F-01.03.01.07	woodruff key	1
20	3.5F-01.03.01.00	Flywheel assy	1
21	F4-01.06.37	Flywheel nut M10	1
22	3.5F-01.02.13	Starting huv	1
23	GB/T5783	hexagonal bolt M6×12	3
24	3.5F-01.02.01.00	starting cover component	1
25	GB/T5783	hexagonal bolt M6×12	2
26	3.5F-01.07.01.00	Fuel tank assy.	1
27	3.5F-01.07.04	Mat tube A	1
28	3.5F-01.07.05	Mat tube B	1
29	GB/T97	flat gasket6	1
30	GB/T96	washer	1
31	GB/T93	Spring washer	2
32	GB/T5783	hexagon headed bolt M6×20	2
33	3.5F-01.07.02.00	Fuel tank cap assembly	1
34	5F-01.04.12	Damper ring,tank	1
35	3.5F-01.01.03	Intake valve plate	1
36	3.5F-01.01.04	Inlet valve seat	1
37	GB/T848	Plane washer	2
38	GB/T93	Spring washer	2
39	GB/T818	Cross-recessed screw	2
40	3.5F-III-01.01.02	tank cover	1
41	F15-01.03.00.42	air pipe bench holdfast B	1
42	GB/T5783	hex bolt M6×30	2
43	GB/T5782	bolt,hexagonal M6×65	4
44	3.5F-01.03.05	charge coil	1
45	GB/T93	Spring washer 5	2
46	GB/T818	Cross-recessed screw	2
47	3.5F-01.03.06	Line card	1
48	GB/T818	Cross recess head screw M5*10	1
49	15F-01.02.07	air choke connecting joint	1
50	3.5F-II-01.04.07.00	carburetor	1
51	3.5F-II-01.04.09.01	adapting piece	1
52	3.5F-II-01.04.09.02		1
53	3.5F-II-01.04.07.04	Intake hood	1
54	3.5F-III-01.04.07.05	adapting piece	1
55	GB/5781-86	hexagonal bolt M6×10	1
56	GB/819-85	cross recessed head screw	2
57	GB/97.1	flat gasket6	1
58	3.5F-II-01.04.09.03	spring	1
59	3.5F-01.03.03	ignition coil	1
60	GB/T97	flat gasket6	1
61	GB/T5783	hexagon headed bolt M6×20	1
62	3.5F-01.03.02	ignition control	1
63	GB/T97	flat gasket6	1
64	GB/T5783	hexagon headed bolt M6×16	4
65	3.5F-01.01.06	cylinder pad	4
66	3.5F-01.01.05	Cover,gasket	1
67	GB/T848	flat gasket6	1
68	GB/T5782	hex bolt M6×30	1
69	3.5F-01.03.04	spark plug	1
70	3.5F-II-02.01.04	bracket	1
71	GB/5783	hexagon headed bolt M6×16	2

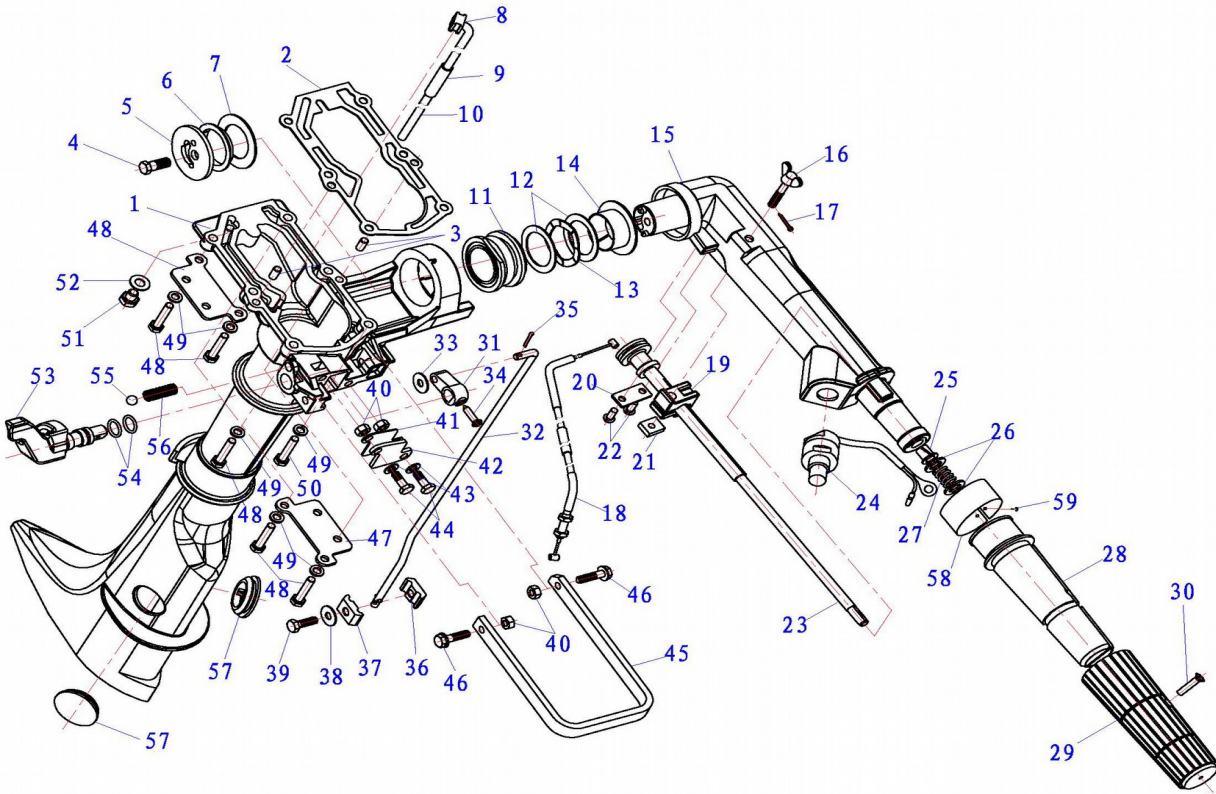
Hangzhou Hidea Power Machinery Co., Ltd.



REF NO	PART CODE	DESCRIPTION (EN)	Q'TY
1	3.5F-03.03.01	revolving bracket	1
2	3.5F-03.01.01	bracket	2
3	9.8F-03.05.10	washer	2
4	GB/T5780-2000	bolt	1
5	DIN985	Hexagonal nut	1
6	3.5F-03.01.03	Clamp plate	2
7	3.5F-03.01.02	intensify transom board screw	2
8	3.5F-03.01.04	intensify handle	2
9	GB/T1015-1986	semitubular oval rivet 4*22	2
10	3.5F-03.02.01.01	Spacing shaft	1
11	3.5F-03.02.01.02	Spacing shaft handle	1
12	GB/T879.2-2000	Elastic cylindrical pin	1
13	3.5F-03.03.02	revolving bracket top	1

14	GB/T97.1	flat gasket6	4
15	GB/T5783-2000	hex bolt M6×30	4
16	3.5F-03.03.04	hold-down locking plate	1
17	GB/T97.1-1985	flat gasket6	1
18	F2.5-03.01.00.02	compressed spring	1
19	F2.5-03.01.00.01	screw	1
20	F4-03.05.06.01	locking knob	1
21	GB/T875-1986	Thin flat head socket shank rivet	1
22	3.5F-03.05	bolt	1
23	GB/T848-1985	flat gasket6	2
24	GB/T6170-2000	hexagonal nut	2
25	3.5F-03.04	bracket seat	1
26	3.5F-03.06.00	Angle-fixation assy	1
27	3.5F-03.03.05	anti-attrition ring B	2

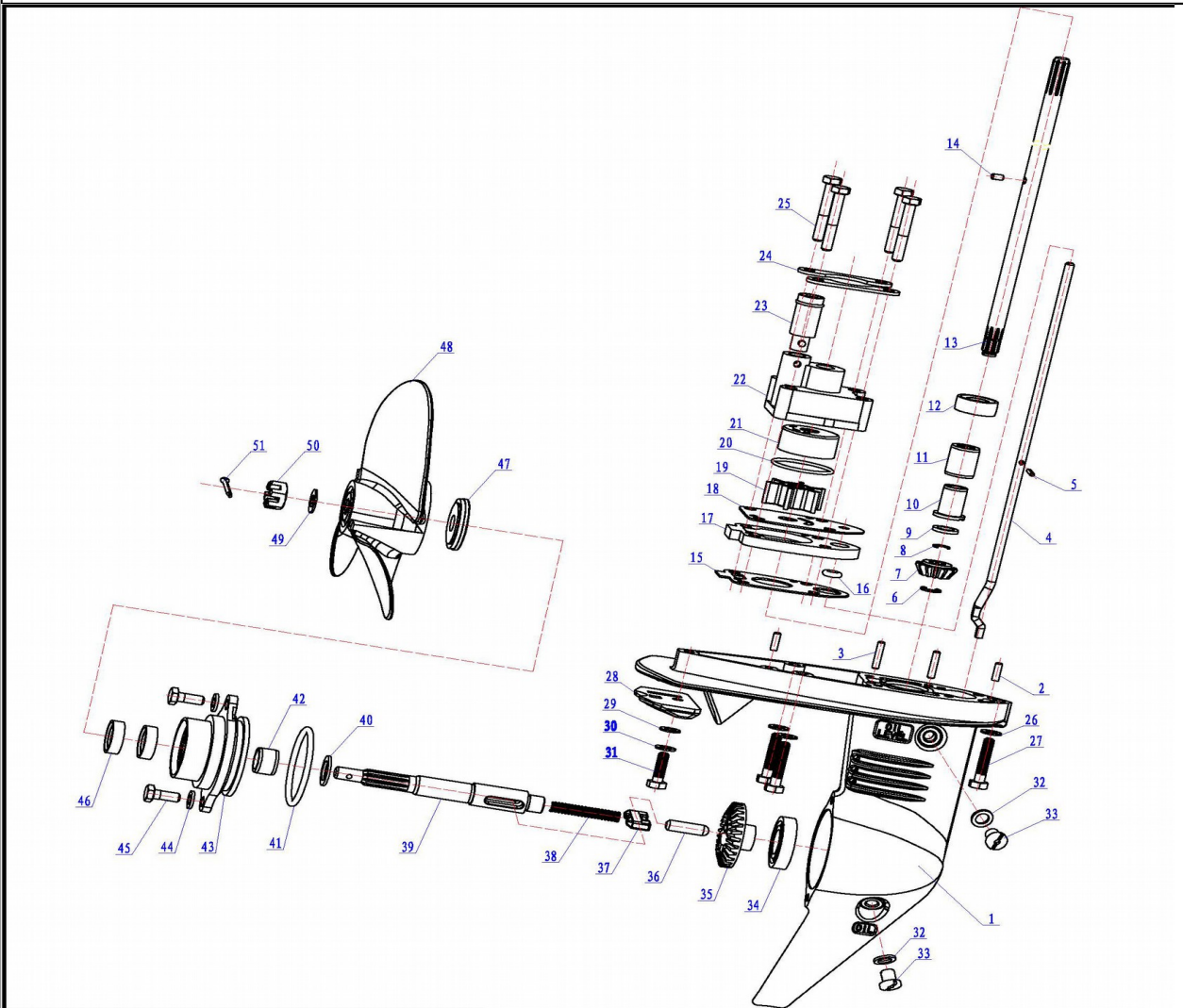
Waterborne Parts



REF NO	PART CODE	DESCRIPTION (EN)	Q'TY
1	3.5F-III-05.01	under water shell	1
2	3.5F-05.04	sealing pad of the body	1
3	15F-01.06.20	locating pin	2
4	GB/T5783	hexagon headed bolt M8*25	1
5	F4-04.03	wheel handle hold-down plate	1
6	F4-04.04	impair friction circle A	1
7	F4-04.05	gasket A	1
8	3.5F-05.02.02	Industry-style rubber circle	1
9	3.5F-05.02.03	rubber pipe	1
10	3.5F-III-05.02.01	water pipe	1
11	F4-04.01.02.00	handle shocking ring assembly	1
12	F4-04.07	Washer	2
13	F4-04.08	waterform gasket ring	1
14	F4-04.06	impair abrasion circle B	1
15	F2.5-04.00.00.02	wheel handle	1
16	F15-04.02.00.08	resistance regulating knob	1
17	GB/T91	Cotter pin	1

18	3.5F-III-01.04.08.00	throttle cable	1
19	15F-04.07.08	latch segment	1
20	15F-04.07.07	hold-down plate for air damper	1
21	F2.5-04.00.00.05	nut	1
22	GB/T818	screw,cross pan head M5×12	2
23	15F-04.07.05	throttle lever	1
24	F2.5-01.05.00.01	emergency stop switches assy	1
25	15F-04.07.12	bushing block	1
26	GB/T848	flat gasket 10	2
27	15F-04.07.11	spring	1
28	15F-04.07.13	handle	1
29	15F-04.07.14	rubber handle cover	1
30	GB/T820	cross recessed raised countersunk screw M5×25	1
31	3.5F-III-05.05.03	link block,geat shift lever	1
32	3.5F-III-05.05.04	connecting rod,shift lever	1
33	GB/T848	Washer	1
34	GB/T15856.1-95	screw,cross pan head	1
35	GB/T91	Cotter pin	1
36	F2.5-05.00.00.08	latch segment B	1
37	F2.5-05.00.00.07	latch segment A	1
38	GB96-85	Washer	1
39	GB/T5783	hexagon headed bolt M6×20	1
40	GB/T6170	hexagonal nut	4
41	3.5F-III-05.05.06	pad	1
42	3.5F-III-05.05.05	cover plate	1
43	GB/T848	Washer	2
44	GB/T5783	hexagon headed bolt M6×16	2
45	3.5F-III-05.06	Lifting yoke	1
46	GB/T5783	the hexagonal head bolt M6×25	2
47	3.5F-II-02.01.05	stand,base	2
48	GB/T5783	the hexagonal head bolt M6×25	5
49	GB/T848	flat gasket6	6
50	GB/T5783	hexagon headed bolt M6×35	1
51	GB/T5783	Hexagonal head bolt M6*18	1
52	15F-06.01.04	washer	1
53	3.5F-III-05.05.01	shift handle	1
54	3.5F-III-05.05.02	o-ring	1
55	F4-05.03	steel ball	1
56	F4-05.04	compressed spring	1
57	F4-05.01.04	upper water choke plug	2
58	F2.5-04.00.00.04	throttle rating plate	1
59	GB/T867	screw,cross pan head	1

Lower Unit



REF NO	PART CODE	DESCRIPTION (EN)	Q'TY
1	F2.5-06.00.00.08	underwater shell	1
2	15F-06.03.08	stop pin	2
3	F4-06.19	stop pin	2
4	F2.5-06.00.00.20	shift cam lever	1
5	F2.5-06.00.00.21	spacer pin	1
6	F4-06.10	split washer	1
7	F2.5-06.00.00.11	driver	1
8	F2.5-06.00.00.26	circlip	1
9	F2.5-06.00.00.10	driver tuning strip	1
10	F2.5-06.00.00.24	upper axle sleeve of underwater body	1
11	F2.5-06.00.00.25	axle guide for underwater shell	1
12	F2.5-06.00.00.23	oil seal	1
13	3.5F-III-06.01.12	drive shaft	1

14	F2.5-06.00.00.16	impeller pin	1
15	F2.5-06.00.00.19	sealing pad	1
16	F2.5-06.00.00.22	O - Ring	1
17	F2.5-06.00.00.18	water pump seat	1
18	F2.5-06.00.00.17	Plate	1
19	F2.5-06.04.00.00	water pump impeller assembly	1
20	F2.5-06.00.00.15	water pump sealing ring	1
21	F2.5-06.00.00.14	pump inner shell	1
22	F2.5-06.00.00.13	hold-down plate for underwater shell	1
23	4F-06.21.04	water pipe sealing ring	1
24	F2.5-06.00.00.12	water pump hold-down plate	2
25	GB/T5782-86	bolt	4
26	GB/T848-85	flat gasket6	3
27	GB/T5783-86	bolt	3
28	F4-06.02	Anode B	1
29	GB/T861.1-87	internal tooth lock washer	1
30	GB/T848-85	flat gasket6	1
31	GB/T5783-86	Hexagonal bolt	1
32	15F-06.01.04	sealing pad of plug screw	2
33	15F-06.01.03	Oil filling opening bolt	2
34	F2.5-06.00.00.07	axletree	1
35	F2.5-06.00.00.06	forward gear unit	1
36	F2.5-06.03.00.02	shift plunger	1
37	F2.5-06.03.00.03	clutch disc	1
38	F4-06.04.02	compression spring	1
39	F2.5-06.03.00.01	propeller shaft	1
40	F2.5-06.00.00.05	gasket	1
41	F4-06.07.03	o-ring	1
42	F2.5-06.00.00.03	shell cover axis guide	1
43	F2.5-06.00.00.01	underwater shell	1
44	GB/T848-85	flat gasket6	2
45	GB/T5783-86	bolt	2
46	F4-06.07.02	oil seal	2
47	F4-06.24	propleer pad	1
48	F2.5-06.01.00.00	component propeller	1
49	GB/T96.1-2000	flat gasket 8	1
50	FRF4H-06.26	nut	1
51	15F-06.14.07	pin.cotter	1